

ShareTech Mail Archive Server is a multifunctional device with features such as email security, email archiving, email auditing, email recording, behavior analysis, and a personal archive interface. ShareTech MA Series offers 3 models, covering user environments ranging from 200-2,000. MA-600+ is at the midrange level of the series line and is suitable for midsized network environments with less than 2,000 users.

MA-600+ features front-end gate protection (anti-virus, anti-spam, proactive audit, ransomware protection) and back-end auditing capabilities (post-mail audit, email record, email archive, and email resume). With a single device, it can meet the email management needs of most small and medium businesses. In addition to basic recording and back-ups, it provides a comprehensive internal-external and external-internal audit mechanism for reviewing users' sent and received emails.



## Feature

### ◆ Multiple Domains and Servers Support

MA-600+ supports multiple domains and mail servers. An email with its attachments can be automatically transferred to storage devices based on pre-defined policies.

### ◆ Mail Gateway

MA-600+ provides strong spam filtering as a secure mail gateway. With ShareTech Mail OS technology and multi-layered scanning, it blocks spam, viruses, malicious emails, relays, phishing emails, spyware, and more, enhancing email security for enterprises.

### ◆ AI Spam (Optional)

AI SPAM employs a dual-stage process using segmented words in English and Chinese for precise spam detection. In the first stage, different types of segmented words are defined, including ads, pornography, entertainment, politics and finance, investment and financial management, money making, shopping, credit cards, procurement, fraud, and food ads.

The second stage involves further categorizing mails into EDMs, spam mails, phishing mails, normal mails, and notification mails based on content and sender behavior, achieving a 99.5% accuracy rate. It continuously learns new attack techniques to combat evolving threats, ensuring quick and accurate identification against malicious mails.



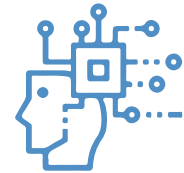
ShareTech's word segmentation database helps to detect spam.



Use Sandstorm to detect phishing mails.



Use Bayesian filter to categorize spam and non-spam mails.



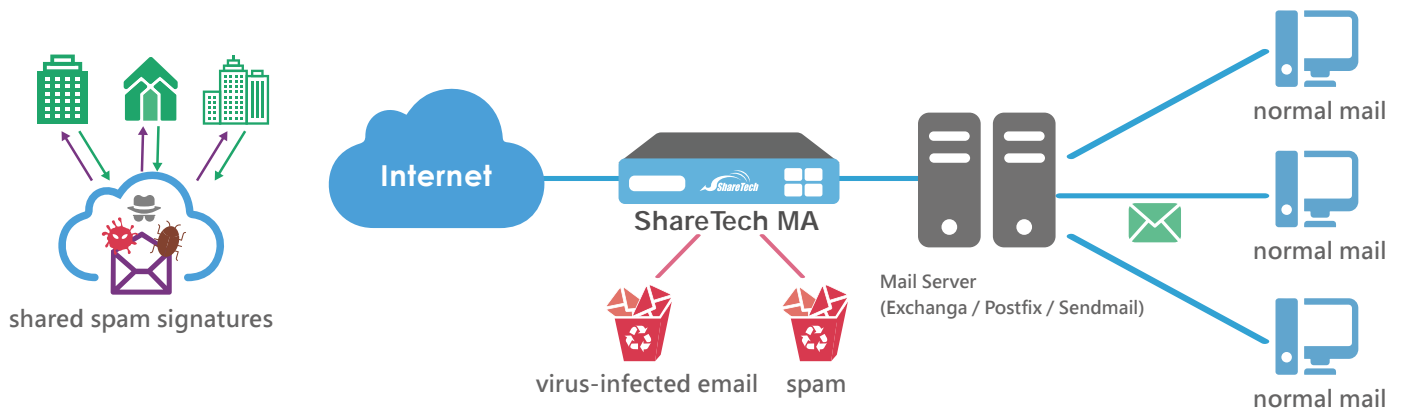
With behavioral analysis and AI content recognition, emails will be further categorized into normal, spam, phishing, EDM, and notification emails.

### ◆Dual Anti-Virus Engines

The system includes Clam AV and Kaspersky (one-year free license) antivirus engines. Clam AV offers permanent and free auto-updates of millions of virus signatures. Users can also choose Kaspersky for enhanced security. Additionally, the system generates detailed virus filtering reports, logs, and anomaly alerts.

### ◆Comprehensive Spam Filtering

MA-600+ employs multi-layered spam filtering, including IP reputation rating, Bayesian auto-learning, URL filter, spam characteristics, spam auto-learning, system blacklist/whitelist, and personal blacklist/whitelist. Through layered filtering, MA-600+ rigorously examines incoming emails, isolating problematic emails and intercepting hidden malware at the first stage.



### ◆Spam Learning and Sharing

ShareTech has its own "Spam Learning and Sharing" mechanism, involving users sharing spam data. ShareTech's R&D team analyzes email behavior using big data algorithms. This helps enterprise users update spam information via shared data from other enterprises. It filters a wide range of email threats more accurately than traditional spam filtering, without the need for complex scanning engines.

### ◆Sandstorm Malware Detection

Sandstorm detects and filters potentially risky files or URLs using HASH value comparison. It blocks malware that escapes detection from virus and IPS feature databases, isolating problematic emails to reveal hidden threats.

## ◆ Email and Personal Data Auditing

Administrators can customize inbound and outbound email rules based on company policies, considering sender/recipient, subject, content, size, and attachments. MA-600+ also provides personal data filtering for sensitive information. When emails meet filtering rules, they can be forwarded to auditors for quarantine, deletion, copies, or notifications.

## ◆ Mail Archive, Retrieval, and Inspection

MA-600+ archives all inbound, outbound, and internal mails in real-time to prevent accidental deletions. It offers an email resume and user-friendly keyword searches. With a personal archiving interface for online searches through a web browser, users can search by domain, user, sender/recipient, subject, content, date, attachments, and more for review, retrieval, or inspection.

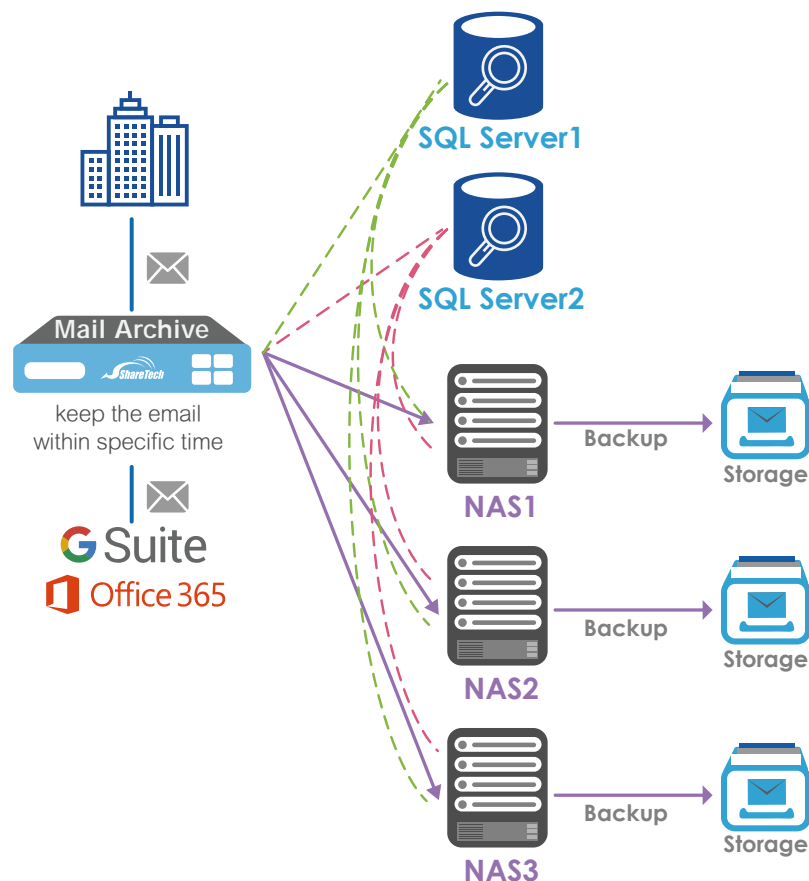
## ◆ Email Record, Archive, and Backup

### ◆ Localhost Storage

MA-600+ comes with four built-in 4TB HDD. It archives recorded emails to the database based on system defaults, retaining them for 7 days.

### ◆ External Storage

MA-600+ supports USB, FTP, and SAMBA backup, securely storing emails on HDD and backup devices for unexpected issues with PCs or mail servers. Administrators can connect multiple storage servers for easy search, review, and retrieval of backed-up emails.



## ◆Office365, Gmail Email Backup File Support

The email backup service supports cloud platforms and storage services, offering a flexible hybrid cloud (public/private) platform. It can integrate with existing Google and Microsoft Office 365 cloud email services, allowing enterprises to continuously audit cloud emails. Additionally, it facilitates storing emails in different locations for risk diversification and remote backup.

## ◆Integration with Multiple Authentication Servers

During login, MA-600+ checks account and password validity. Currently, it can integrate servers such as Radius, AD, POP3, IMAP, LDAP, and Google OAuth.

## ◆Flexible Role-Based Management

Flexible permission settings include Admin, Inquirer, and User roles. Following the company's decentralization policies, MA-600+ can limit every administrator's management permission and item, including system management, SMTP server settings, bridge mode, domain management, authentication, and permission management.

## ◆Event Logs

MA-600+ provides information, warnings, errors, and event time within the system. The simple yet detailed log query simplifies system maintenance. Administrators can easily search various logs via a web browser for efficient management.



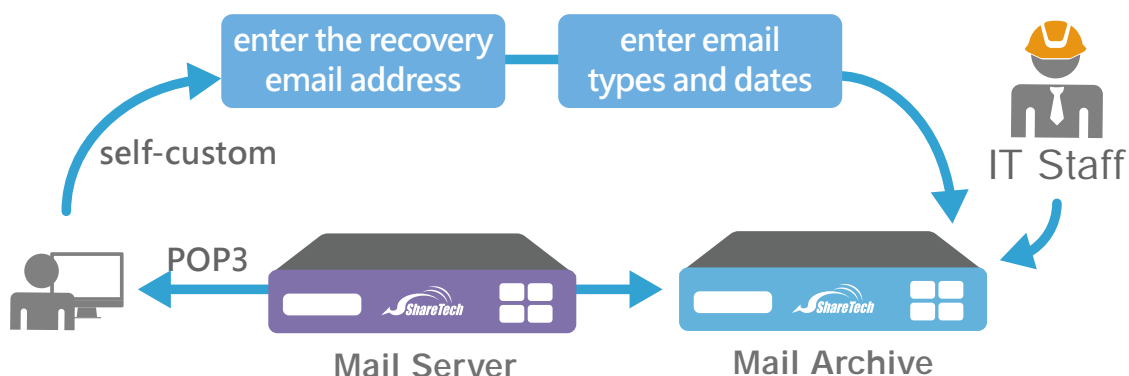
| Time        | From           | To             | Sender                 | Recipient             | Subject                           | Size    | Sync | Type | Handle |
|-------------|----------------|----------------|------------------------|-----------------------|-----------------------------------|---------|------|------|--------|
| 12-30 11:59 | 200.243.200.66 | 200.243.200.66 | mathan@udrcapac...     | guest@demo.sharite... | 【正式聲明】貴州省信譽佳...                   | 99.0 KB | 0    | Sync |        |
| 12-30 11:14 | 200.243.200.66 | 200.243.200.66 | mathan@udrcapac...     | guest@demo.sharite... | 轉發(0)陳輝輝轉發他人, 59537個              | 50.1 KB | 0    | Sync |        |
| 12-30 10:45 | 200.243.200.66 | 200.243.200.66 | mathan@udrcapac...     | guest@demo.sharite... | 轉發(0)貴州100元 貴州信譽佳...              | 88.0 KB | 0    | Sync |        |
| 12-30 10:29 | 200.243.200.66 | 200.243.200.66 | mathan@udrcapac...     | guest@demo.sharite... | 轉發(0)貴州信譽佳 貴州信譽佳...               | 87.2 KB | 0    | Sync |        |
| 12-30 10:29 | 200.243.200.66 | 200.243.200.66 | mathan@udrcapac...     | guest@demo.sharite... | 轉發(0)貴州信譽佳 貴州信譽佳...               | 85.9 KB | 0    | Sync |        |
| 12-30 10:29 | 200.243.200.66 | 200.243.200.66 | mathan@udrcapac...     | guest@demo.sharite... | 轉發(0)貴州信譽佳 貴州信譽佳...               | 52.6 KB | 0    | Sync |        |
| 12-30 10:14 | 199.79.83.200  | 200.243.200.66 | billing101@kendon.a... | guest@demo.sharite... | Netflix: Update your billing i... | 40.8 KB | 0    | Sync |        |

## ◆Personal Archive Interface

MA-600+ provides a personal archive interface for domain, department, and individual user queries. The email search includes multiple fields such as sender, recipient, subject, content, and date. Additionally, an Outlook Plug-in enables users to search archived emails directly through Outlook.

### ◆ Personal Email Disaster Recovery

In the past, file recovery often relied on IT personnel, but today, recovery tasks are executed by users. With the backup and restore feature, users can easily recover all their emails in case of computer/HDD damage or data loss.



### ◆ Personal Dashboard

MA-600+ offers personalized reports with a graphic view and customizable date ranges. Clear statistical charts display regular, spam, and virus emails. Users are given more visibility into their email flow statistics.



### ◆ Web UI Management/System Configuration

MA-600+ offers a web-based configuration interface for users to select language preferences (Traditional/Simplified Chinese and English). Administrators can also customize the browser title, homepage title, and server name.

### ◆ Unlimited User Accounts

MA-600+ has no user limit and offers free firmware updates, including spam signature database and ClamAV antivirus engine. Its performance scales with email volume and integrates with the Eye Cloud management platform, reducing maintenance costs.

|                                   |                                    | MA-200   | MA-400                                     | MA-600+           |                |
|-----------------------------------|------------------------------------|--|--|-------------------|----------------|
| <b>Hardware &amp; Capacity</b>    |                                    |  |  |                   |                |
| RAM [GB]                          |                                    | 4GB  | 8GB  | 16GB              |                |
| HDD                               |                                    | 1TB  | 2TB  | 4TB*4             |                |
| Rack Unit                         |                                    | 1U rack-mountable  | 1U rack-mountable                          | 1U rack-mountable |                |
| LCM                               |                                    | •  | •  | x                 |                |
| User Accounts                     |                                    | Unrestricted   | Unrestricted                               | Unrestricted      |                |
| Recommended Number of Users       |                                    | Under 200  | Under 500                                  | Under 2000        |                |
| Email Processing/Day (100KB/Mail) |                                    | 60,000 (6G)  | 120,000 (12GB)                             | 2,000,000 (15GB)  |                |
| <b>Features</b>                   |                                    |  |  |                   |                |
| Mail Gateway                      |                                    | •  | •  | •                 |                |
| System Management                 | Network Setup                      | IPv4/IPv6  | •  | •                 |                |
|                                   | Multiple Domains (Names)           |  | •  | •                 |                |
|                                   | Role-Based Administration          |  | •  | •                 |                |
|                                   | Backup Management                  | Remote Backup(NAS/Samba/FTP/USB)                           |  | •                 | •              |
|                                   |                                    | Online Browsing  |  | •                 | •              |
|                                   |                                    | Search for Nearline Storage Mails                          |  | •                 | •              |
|                                   |                                    | Mail Disaster/System Recovery                              |  | •                 | •              |
|                                   | Architecture                       | Bridge Mode  |  | •                 | •              |
| Gateway Mode                      |                                    | •  | •  |                   |                |
| IMAP/POP3 Proxy                   |                                    | •  | •  |                   |                |
| Access Management                 | Privilege                          | Admin/Inquirer/User  | •  | •                 |                |
| Authentication & Permissions      | oAuth                              | Google OAuth 2.0   | •  | •                 |                |
|                                   |                                    | Office 365 OAuth 2.0                                       | •  | •                 |                |
|                                   | Account Integration                | LDAP   | •  | •                 |                |
| Mail Audit & Firewall             | Active Directory (AD)              |  | •  | •                 |                |
|                                   | Audit Rules                        |  | •  | •                 |                |
|                                   | Mail Firewall                      |  | •  | •                 |                |
| Antivirus                         | Engine                             | IP Blocking  | •  | •                 |                |
|                                   |                                    | Clam AV  | •  | •                 |                |
|                                   |                                    | Kaspersky  | Optional                                   | 1-year license    | 1-year license |
| Spam Filtering                    | Database                           | IP Reputation  | •  | •                 |                |
|                                   |                                    | Bayesian Filtering   | •  | •                 |                |
|                                   |                                    | URL Filtering  | •  | •                 |                |
|                                   |                                    | Auto Learning & Sharing                                    | •  | •                 |                |
|                                   |                                    | System/Personal B/W Listing                                | •  | •                 |                |
|                                   |                                    | Sandstorm  | •  | •                 |                |
|                                   |                                    | AI Spam  | Optional                                   | Optional          | Optional       |
| Email Auditing & Archiving        | Mail Migration                     | POP3   | •  | •                 |                |
|                                   |                                    | IMAP   | •  | •                 |                |
|                                   |                                    | Cloud HDD  | •  | •                 |                |
|                                   | Pre-/Post-Auditing                 |  | •  | •                 |                |
|                                   | Online Browse/Search               |  | •  | •                 |                |
|                                   | Personal Email Archiving           |  | •  | •                 |                |
|                                   | Email Query/Forward                |  | •  | •                 |                |
|                                   | Attachment/Content Search          |  | •  | •                 |                |
| Auditing & Filtering              |                                    | •  | •  |                   |                |
| Mail Encryption                   | Encryption Mode                    |  | Optional                                   | •                 |                |
|                                   | Settings                           |  | Optional                                   | •                 |                |
| Personal Archiving                | Email Query                        |  | •  | •                 |                |
|                                   | Email Auditing                     |  | •  | •                 |                |
|                                   | Email Quarantine/Deletion          |  | •  | •                 |                |
|                                   | Mail Behavior Analysis             | Association Graph (Including Total Mailing & Working Hour) |  | Optional          | Optional       |
| Mail Resume                       |                                    | Optional   | •  |                   |                |
| Others                            | Personal Dashboard                 |  | •  | •                 |                |
|                                   | TLS Protocol                       |  | •  | •                 |                |
|                                   | High Availability (HA)             |  | •  | •                 |                |
|                                   | Uninterruptible Power Supply (UPS) |  | •  | •                 |                |
|                                   | WEB UI                             |  | English and Traditional/Simplified Chinese |                   |                |
|                                   | Max Number of Users                |  | Unrestricted                               | Unrestricted      | Unrestricted   |