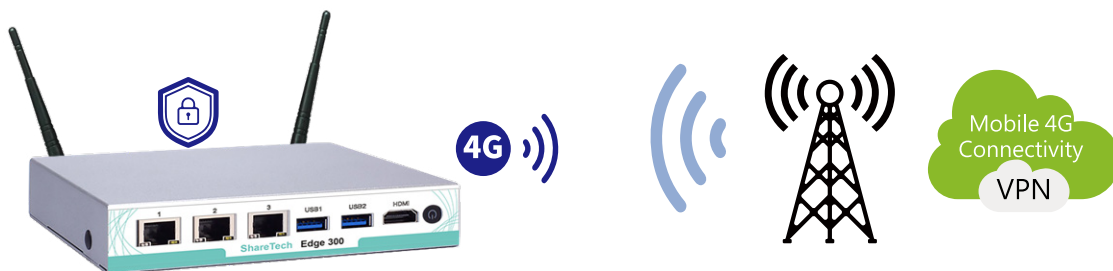


1 2 3 Giga Ports 4 5 USB Ports 6 HDMI Ports 7 Power Button 8 LTE Antenna

Edge 300 is a desktop-form-factor device equipped with three Gigabit Ethernet ports, including one dedicated management port, while the other two can be flexibly configured to suit deployment needs. With a built-in 4G LTE module, it provides both wired backup connectivity and rapid deployment for locations where cabling is difficult or unavailable, such as exhibition booths, parking systems, outdoor charging stations, and IoT sites. LTE's wide coverage and plug-and-play capability ensure stable connectivity, enabling reliable data transmission, remote monitoring, and continuous security management.



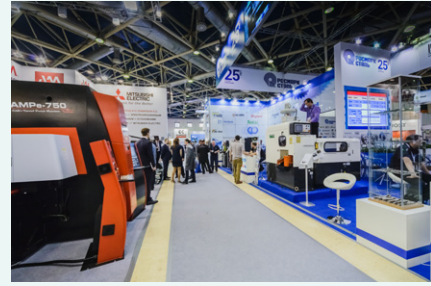
4G LTE	<ul style="list-style-type: none"> • Wired + 4G LTE Dual-WAN Support • Automatic Failover • Intelligent Traffic Steering and Routing Management
Security	<ul style="list-style-type: none"> • Firewall Protection • AI IPS Intrusion Detection • AI Sandstorm Malware Detection
Management	<ul style="list-style-type: none"> • VPN Management • Bandwidth Control • Anomalous Traffic Monitoring

Edge 300 Deployment Scenarios



Mobile Healthcare / Ambulance

In mobile clinics, ambulances, and EHR (Electronic Health Record) transmission scenarios, Edge 300 delivers stable connectivity via 4G LTE, ensuring real-time medical data transmission to support remote diagnosis and emergency response.



Exhibition Booths / Vendors

During exhibitions, vendors require reliable connectivity for POS transactions, cloud-based displays, and real-time customer data access. Edge 300 provides rapid and flexible connectivity without relying on fixed wired infrastructure.



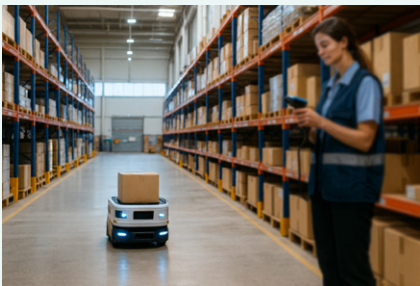
Parking & EV Charging

Secure connectivity for outdoor parking systems and charging infrastructure with real-time monitoring and alerts.



Manufacturing IoT

LTE-based connectivity for AGVs, automation equipment, and sensors in wireless or temporary production environments.



Manufacturing IoT

LTE-based connectivity for AGVs, automation equipment, and sensors in wireless or temporary production environments.

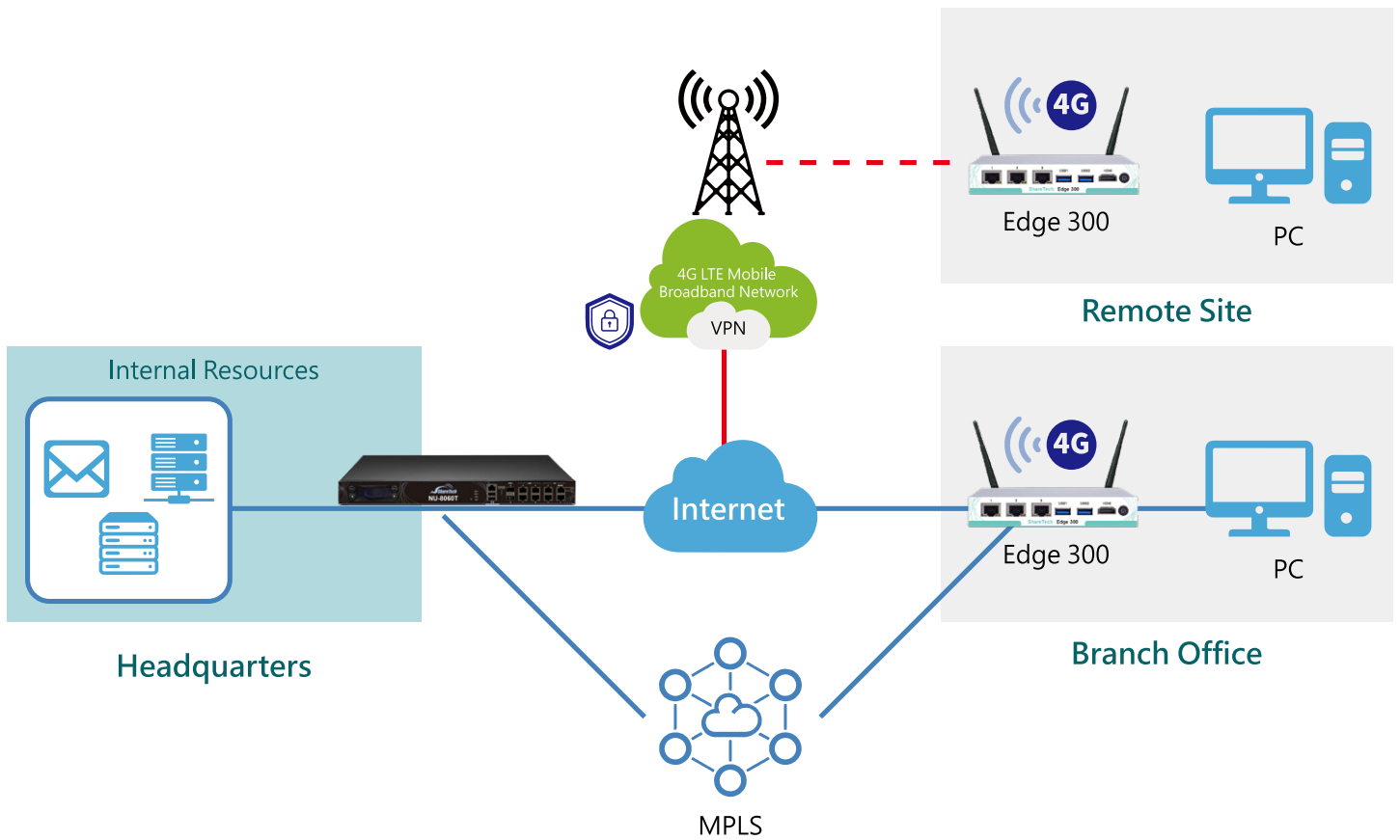


Construction & Temporary Sites

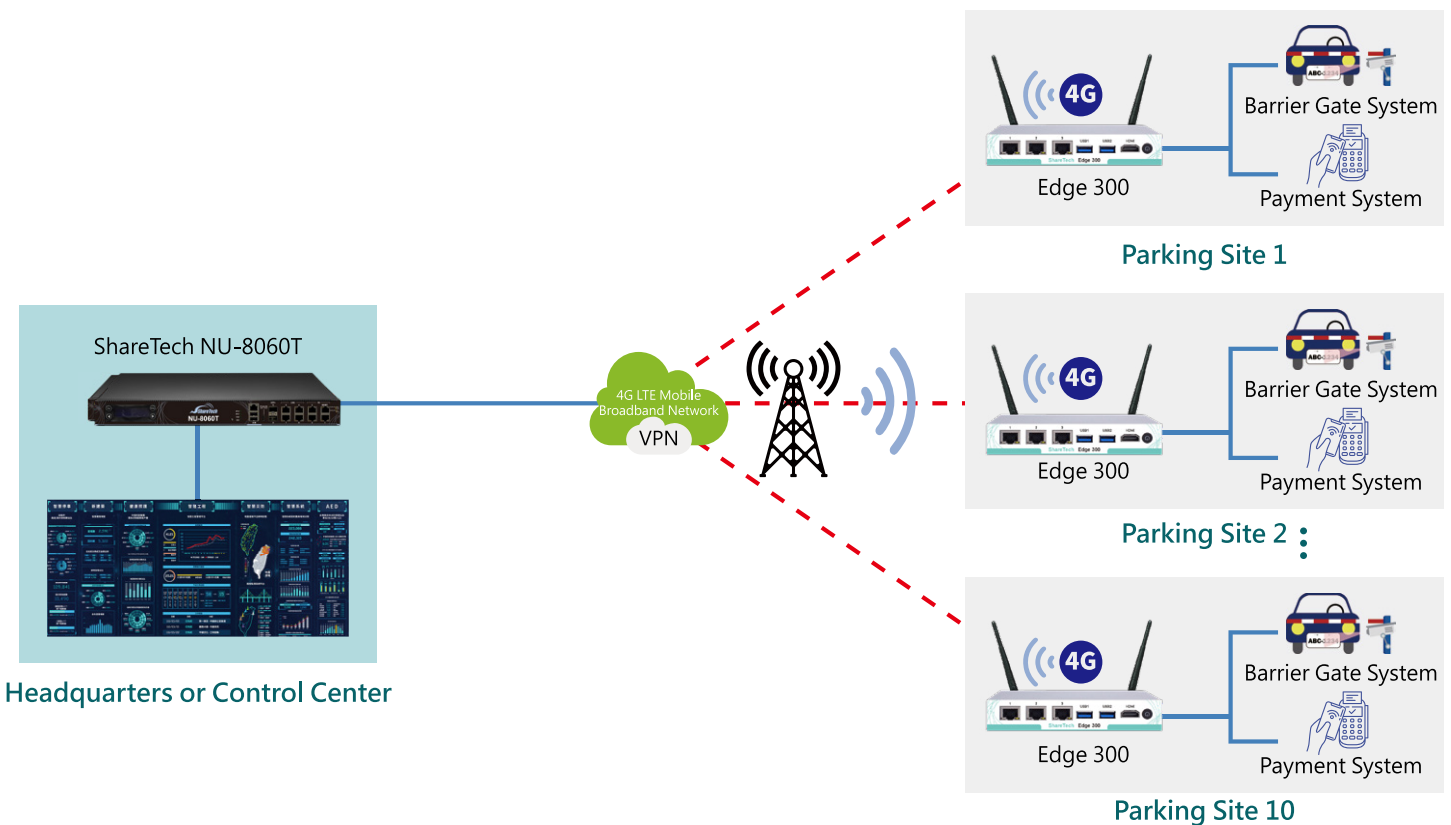
Rapid network deployment for surveillance, access control, and on-site operations without wired infrastructure.

Deployment Architecture

Headquarters and Branch Offices



Secure IoT Deployment — Parking Management



Edge 300 Security Features

SSL Inspection

To protect network from threats, SSL inspection is the key used to unlock encrypted sessions, see into encrypted packets, find threats, and block them. Several security features that can be applied using SSL certificate inspection are ISP, gateway anti-virus, web filtering, application control, and QoS.

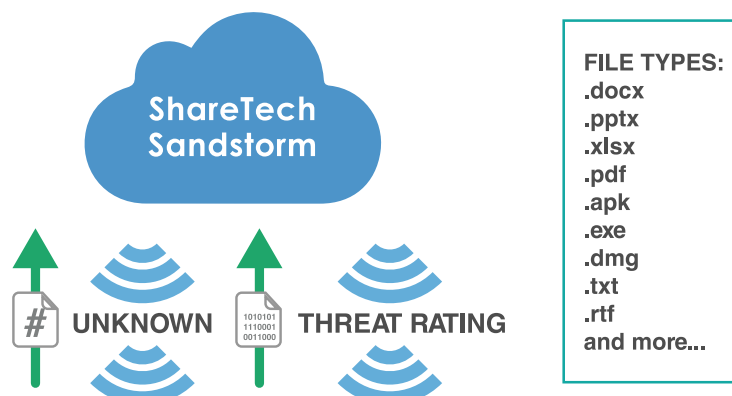


AI AI Intrusion Prevention System (AI IPS)

Built-in IPS inspects the packets across OSI layers 4-7, from the transport layer to the application layer, and blocks concealed malicious code and worms delivered in TCP/IP protocols. As soon as an attack is suspected, IT administrators will be notified immediately, and later an extensive range of reports will be available for analysis. ShareTech regularly updates the predefined attack signature database and makes it available as an IPS security package.

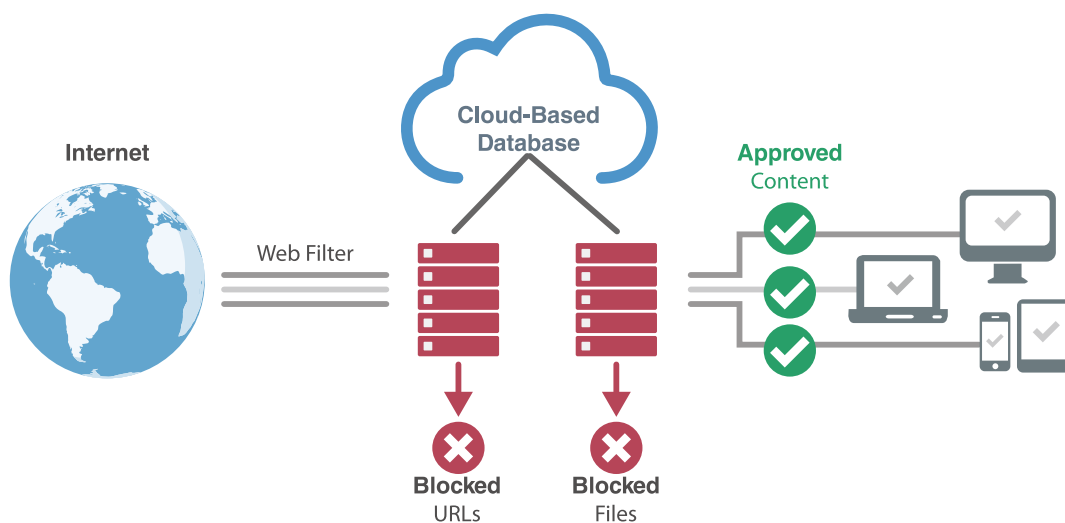
AI AI ShareTech Sandstorm (Malicious Programs Filtering System)

To detect unknown attached files, such as Word, Excel, PowerPoint, PDF, ZIP, or RAR format, IT administrators can apply ShareTech Sandstorm inspection with four types of security inspection: file hash, Web URL, domain, and IP. Threatening emails will be quarantined and will not have the opportunity to affect the operation of the email system.



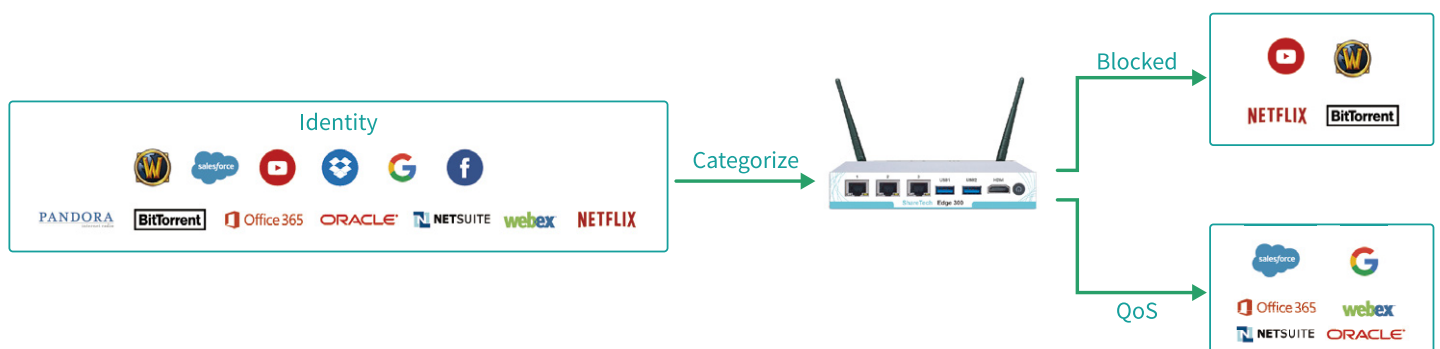
Advanced URL Control and Database

Advanced URL database collects millions of URLs and is updated regularly. All these URLs and their contents are analyzed and classified, including Pornography and Violence, Network and Cloud Service, Organizations and Education, Security Risks and Criminal, Life Information, and Others. IT administrators can easily block any category in the database without the need to manually enter individual keywords or URLs. By default, Edge 300 contains 1-year URL license. License renewal ensures continuous access to the latest signature and database updates.



Advanced Application Control and Database

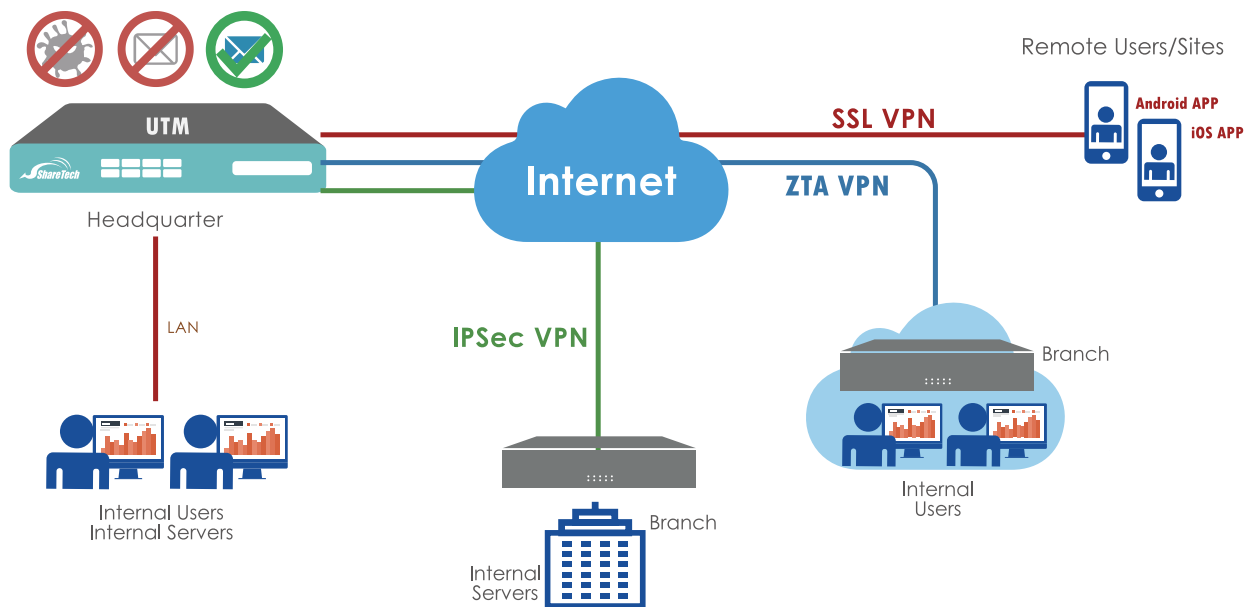
To enforce acceptable use policies and support regulatory compliance, access to non-work-related applications during working hours can be controlled. The advanced application database contains 1000+ modernized applications like P2P, VOIP, GoToMyPC, Webpages, Games, Media Player, Bit Torrent, Foxy (Gnutella), stock market, Instant Messaging, Xunlei, Gator, Virus and Malware, filename extension, Facebook, etc. By default, Edge 300 contains 1-year application license. License renewal ensures continuous access to the latest signature and database updates.



Edge 300 Security Features

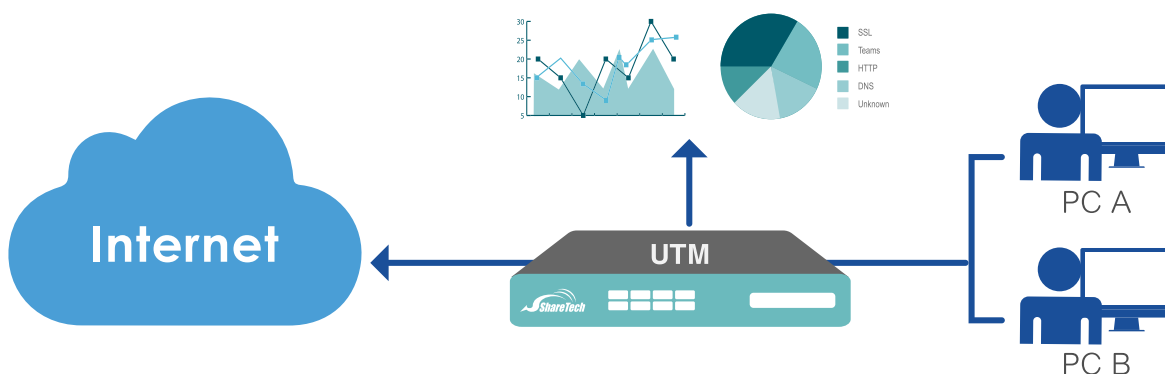
Efficient Multi-Site Secure Connectivity

ShareTech provides secure, flexible VPN connectivity for remote users and distributed sites with centralized management and visibility. Supporting IPSec, PPTP, L2TP, SSL VPN, and ZTA VPN—with strong encryption, cross-platform clients, and Auto VPN for simplified deployment—Edge300 enables rapid and secure inter-site connectivity. Integrated SD-WAN over IPSec VPN further optimizes bandwidth, reduces latency, lowers connectivity costs, and ensures uninterrupted access to critical applications through intelligent multi-WAN traffic routing and automatic failover.



Threat Intelligence Dashboard (Optional)

Provides real-time visibility into network activity, including threats, connections, applications, bandwidth usage, and web traffic. Powered by application-layer DPI, it analyzes devices, users, and application behavior to enhance monitoring, simplify management, and support informed security decisions through real-time and historical insights.



Edge 300	
Hardware	
Platform size	Desktop
Fanless Design	●
Recommended users numbers	~50
Ethernet interfaces	3 x Gigabit
Custom ports	2
USB	2.0 x 2
4G LTE	●
Power consumption	36 W
Capacity	
Max firewall throughput	1.2 Gbps
Max. concurrent sessions	200,000
New sessions per second	65,000
IPS throughput	600 Mbps
VPN throughput	300 Mbps
VPN Tunnels	
IPSec VPN	500
PPTP/L2TP/SSL VPN	200
IP tunnel	100
Network Protection	
Anti-virus engine	ClamAV
Kaspersky/ShareTech	1-Year Subscription Included**
AI IPS	●
AI Sandstorm	●
Spam filtering & shared signatures	●
URL control & database	1-Year Subscription Included
APP control & database	1-Year Subscription Included
WAF	●
Geo IP	●
Dashboard	Optional
Load balance (Out/In)	● / ●
Authentication	POP3, IMAP, RADIUS, Active Directory, LDAP
2FA	●
Passwordless Authentication	●
High availability	●
VPN	L2TP / PPTP / IPSec / SSL / ZTA VPN
SD-WAN	●
Wizard	●
Eye Cloud	●
Others	
Industrial Protocol Support	EtherCAT, Ethernet/IP, MODBUS, DNP3, DNP3-Secure, IEC-104, IEC-104-SEC, IEC-61850, MMS, BACNet, LonWorks, LonWors2, PROFINET, Citrix, MQTT, MQTT over SSL Siemens OPC-UA, Kepware OPC-UA
Operating Temperature Range	0° C to +40° C
Operating Humidity Range	10% to 90% RH, Non-condensing
NCC Certification	CCAK22Y00031T7

**Choosing between two Anti-virus Engines.

2026.03