



ShareTech Mail Archive



Mail Archive



Mail Data
Analytics



Cloud-Based
Backup



Mail Security



Security Features

- **Multiple Domains & Servers Support**

ShareTech MA Series supports multiple domains and mail servers. For example, sharetech.com.tw and tpsharetech.com.tw. Email with its attachments will be transferred and archived based on administrator defined policies.

- **Mail Gateway**

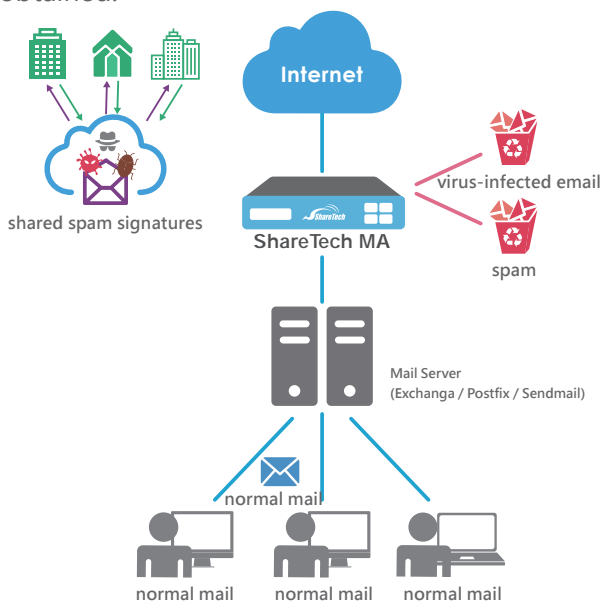
ShareTech MA Series provides fast and accurate email security that does not affect end users or delay their communications. Appliances can be deployed on premises and gateway to defend your mission-critical email systems.

- **Dual Anti-Virus Engines**

Built-in Clam AV can detect over 5,000,000 kinds of Trojans, viruses, malware & other malicious threats. Moreover, clients can purchase Kaspersky module which ensures a rapid response to new attacks. Legitimate email will be quarantined as virus-infected email, and the system can keep logs, create reports, or issue an alert notification.

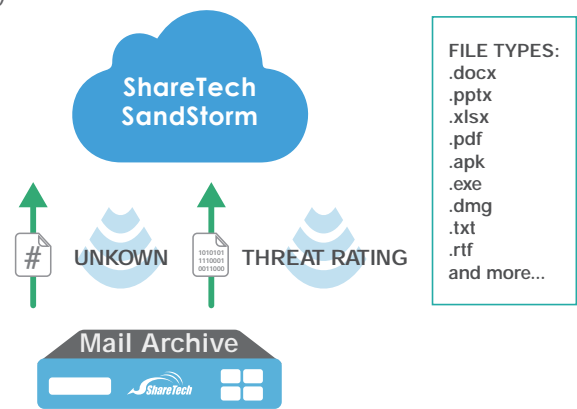
- **Anti-Spam and Shared Signatures**

The MA Series employs multi-spam filters: ST-IP Network Rating, Bayesian Filtering, spam characteristics filtering, fingerprinting, auto learning, and personal B/W list. It also gives administrators the flexibility to enforce custom filtering. Moreover, the shared signatures mechanism shares a signature of an early receiver with the rest of the group so that higher spam detection accuracy can be obtained.



- **ShareTech Sandstorm Malicious Programs Filtering System**

To detect unknown attached files, such as file in Word, Excel, PowerPoint, PDF, ZIP or RAR format, ShareTech Sandstorm system will compare the suspicious files with our database. Threatening email will be quarantined and will not have the opportunity to affect the operation of the email system.



- **Email & Personal Data Auditing**

Security policies can be created and prioritized by the system administrator in the user interface based on governmental regulations or internal business processes. Both incoming and outgoing mails are handled according to recipients, senders, subjects, size, attachments, etc. Moreover, protection for personally identifiable information are provided such as ID number, credit card number, phone number, mobile number, and date of birth.

- **Mail Archive Retrieval & Inspection**

MA Series protects organizations' email from accidental deletion, provides email resume, and allows for quick searching and data retrieval in the email archive. This system allows users to enter a keyword search query on web-based interfaces to search through all fields. Users can either read or retrieve crucial documents for investigations.

- **Securely Backup Office 365 & Gmail**

MA Series backup solution supports cloud-based storage platform by creating hybrids clouds which gives businesses greater flexibility. MA Series can integrate with Google and Microsoft Office 365. Data can be securely stored in different geographically locations as off-site backup.

- **Email Record, Archive & Backup**

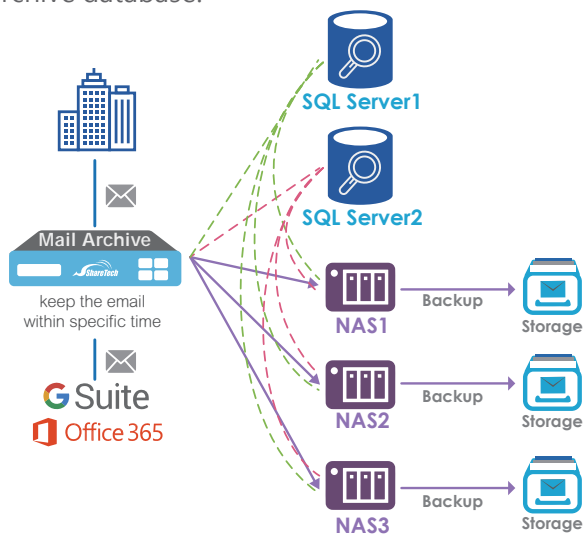
Storage can be divided into two main types:

- A. **Localhost Storage**

By default, archiving policies can be applied to move email messages automatically to archive database.

- B. **Remote Storage**

USB flash drive, FTP, SAMBA are supported for users to retrieve individual messages through Network Neighborhood in a failover. Administrators can search for archived messages, inspect its contents and retrieve them easily from within their archive database.



- **Multiple Server-Based Password Authentications**

ShareTech MA Series supports the use of RADIUS, AD, POP3, IMAP, LDAP servers and Google oAuth for authentication. A valid user name, password and full email address are required to connect to these authentication servers.

- **Role-based System Administration**

After securely assigning different levels of initial accesses, users have fully integrated functionality to grant, manage, and revoke items such as system management, SMTP server, bridge mode, domain management, and authentication across internal and external organizations.

- **Event Logs Analyzer**

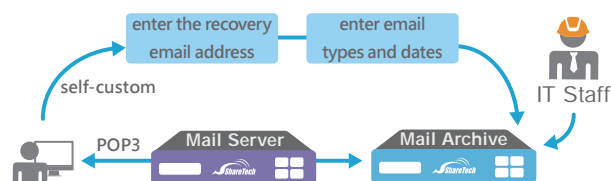
MA Series provides a solution to handle complete network fault management from one window. Administrators are capable of searching through events logs efficiently for evidence of a particular event.

- **Personal Archive Interface**

For a better experience, ShareTech recommends using the Outlook Plug-in that users can access archived email from Outlook on the web. Individual users are allowed searching over fields in domain, department, and personal email usage, and further perform searches for any words in the sender name, recipient, subject, body, date, etc.

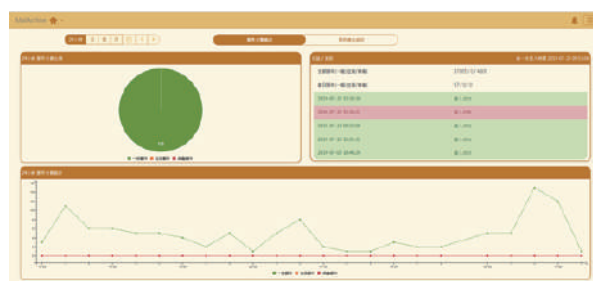
- **Individual Mailbox Backup & Restore**

ShareTech MA Series provides an easier way to perform individual mailbox backup and restore. When hard drive failure or unforeseen circumstances occurs, the system allows users to directly resend email stored on the MA appliances to designated accounts.



- **Personal Dashboard**

MA series provides personal dynamic dashboard in the web user interface presenting a graphic view of personal email statistics. Users can specify a date range to analyze their ordinary email, spam email, and virus -infected email activities. In this way, users are given more visibility into their email flow statistics.



SPECIFICATIONS

		MA-200	MA-400	MA-600+	
Hardware & Capacity					
RAM [GB]		4GB	8GB	16GB	
HDD		1TB	2TB	4TB*4	
Rack Unit		1U rack-mountable	1U rack-mountable	1U rack-mountable	
LCM		•	•	x	
User Accounts		Unrestricted	Unrestricted	Unrestricted	
Recommended Number of Users		Under 200	Under 500	Under 2000	
Email Processing/Day (100KB/Mail)		60,000 (6G)	120,000 (12GB)	2,000,000 (15GB)	
Features					
Mail Gateway		•	•	•	
System Management	Network Setup	IPv4/IPv6	•	•	
	Multiple Domains (Names)		•	•	
	Role-Based Administration		•	•	
	Backup Management	Remote Backup(NAS/Samba/FTP/USB)		•	•
		Online Browsing		•	•
		Search for Nearline Storage Mails		•	•
		Mail Disaster/System Recovery		•	•
	Architecture	Bridge Mode		•	•
		Gateway Mode		•	•
IMAP/POP3 Proxy		•	•		
Access Management	Privilege	Admin/Inquirer/User	•	•	
Authentication & Permissions	oAuth	Google OAuth 2.0	•	•	
		Office 365 OAuth 2.0	•	•	
	Account Integration	LDAP	•	•	
		Active Directory (AD)	•	•	
Mail Audit & Firewall	Audit Rules		•	•	
	Mail Firewall		•	•	
	IP Blocking		•	•	
Antivirus	Engine	Clam AV	•	•	
		Kaspersky	Optional	1-year license	
Spam Filtering	Database	IP Reputation	•	•	
		Bayesian Filtering	•	•	
		URL Filtering	•	•	
		Auto Learning & Sharing	•	•	
		System/Personal B/W Listing	•	•	
		Sandstorm	•	•	
	AI Spam	Optional	Optional		
Email Auditing & Archiving	Mail Migration	POP3	•	•	
		IMAP	•	•	
		Cloud HDD	•	•	
	Pre-/Post-Auditing		•	•	
	Online Browse/Search		•	•	
	Personal Email Archiving		•	•	
	Email Query/Forward		•	•	
Mail Encryption	Encryption Mode		Optional	•	
	Settings		Optional	•	
Personal Archiving	Email Query		•	•	
	Email Auditing		•	•	
	Email Quarantine/Deletion		•	•	
	Mail Behavior Analysis	Association Graph (Including Total Mailing & Working Hour)	Optional	Optional	
		Mail Resume	Optional	•	
Others	Personal Dashboard		•	•	
	TLS Protocol		•	•	
	High Availability (HA)		•	•	
	Uninterruptible Power Supply (UPS)		•	•	
	WEB UI		English and Traditional/Simplified Chinese		
	Max Number of Users		Unrestricted	Unrestricted	Unrestricted