



# Mail Archive



Mail Archive



Mail Data Analytics



Cloud-Based Backup



Mail Security





# Security Features

## • Multiple Domains and Servers Support

MA Series supports multiple domains (e.g., sharetech.com.tw; tpsharetech.com.tw) and mail servers. An email with its attachments can be automatically transferred to storage devices based on pre-defined policies.

## • Mail Gateway

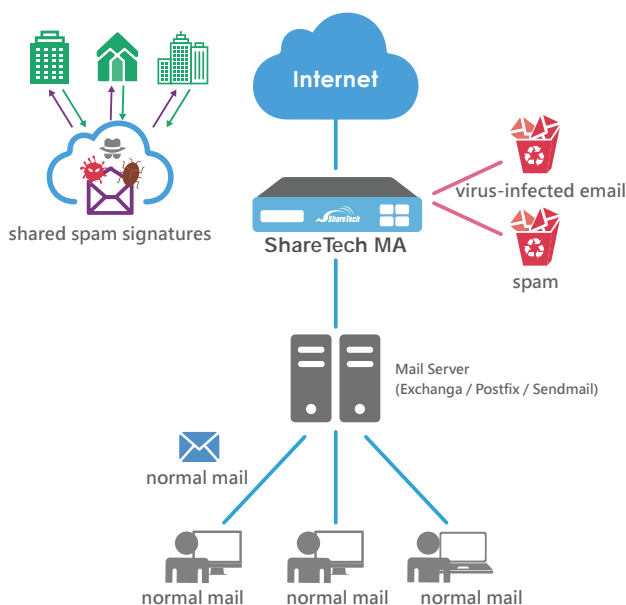
MA Series provides strong spam filtering as a secure mail gateway. With ShareTech Mail OS technology and multi-layered scanning, it blocks spam, viruses, malicious emails, relays, phishing emails, spyware, and more, enhancing email security for enterprises.

## • Dual Anti-Virus Engines

The system includes Clam AV and Kaspersky (optional) antivirus engines. ClamAV offers permanent and free auto-updates of millions of virus signatures. Users can also choose Kaspersky for enhanced security. Additionally, the system generates detailed virus filtering reports, logs, and anomaly alerts.

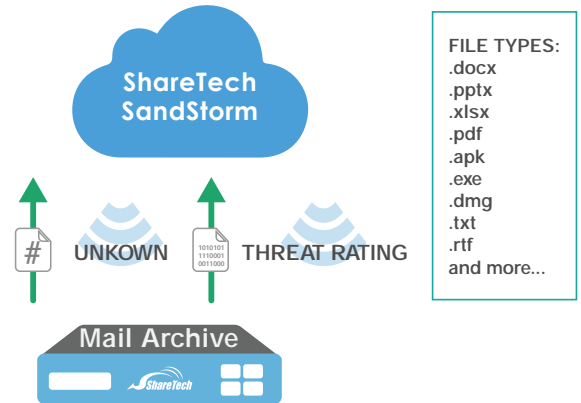
## • Spam Filtering, Learning, and Sharing

MA Series employs multi-layered spam filtering, including IP reputation rating, Bayesian auto-learning, URL filter, spam characteristics, spam auto-learning, system blacklist/whitelist, and personal blacklist/whitelist. In addition, ShareTech's "Spam Learning and Sharing" helps enterprise users update spam information via shared data from other enterprises. It filters a wide range of email threats more accurately than traditional spam filtering, without the need for complex scanning engines.



## • Sandstorm Malware Detection

Sandstorm detects and filters potentially risky files or URLs using HASH value comparison. It blocks malware that escapes detection from virus and IPS feature databases, isolating problematic emails to reveal hidden threats.



## • Email and Personal Data Auditing

Administrators can customize inbound and outbound email rules based on company policies, considering sender/recipient, subject, content, size, and attachments. MA Series also provides personal data filtering for sensitive information. When emails meet filtering rules, they can be forwarded to auditors for quarantine, deletion, copies, or notifications.

## • Mail Archive, Retrieval, and Inspection

MA Series archives all inbound, outbound, and internal mails in real-time to prevent accidental deletions. It offers an optional email resume and user-friendly keyword searches. With a personal archiving interface for online searches through a web browser, users can search by domain, user, sender/recipient, subject, content, date, attachments, and more for review, retrieval, or inspection.

## • Office365, Gmail Email Backup File Support

The email backup service supports cloud platforms and storage services, offering a flexible hybrid cloud (public/private) platform. It can integrate with existing Google and Microsoft Office 365 cloud email services, allowing enterprises to continuously audit cloud emails. Additionally, it facilitates storing emails in different locations for risk diversification and remote backup.

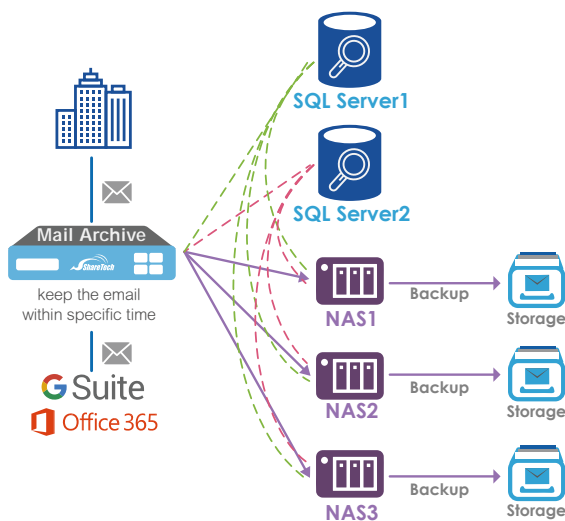
## • Email Record, Archive, and Backup

### A. Local Storage

MA Series has a built-in hard drive capacity of over 1TB. It archives recorded emails to the database based on system defaults, retaining them for 7 days.

### B. External Storage

MA Series supports USB, FTP, and SAMBA backup, securely storing emails on HDD and backup devices for unexpected issues with PCs or mail servers. Administrators can connect multiple storage servers for easy search, review, and retrieval of backed-up emails.



## • Integration with Multiple Authentication Servers

During login, MA Series checks account and password validity. The account must be a complete email address to establish a correct connection to the authentication server. Currently, it can integrate servers such as Radius, AD, POP3, IMAP, LDAP, and Google OAuth.

## • Flexible Role-Based Management

Flexible permission settings include Admin, Inquirer, and User roles. Following the company's decentralization policies, MA Series can limit every administrator's management permission and item, including system management, SMTP server settings, bridge mode, domain management, authentication, and permission management.

## • Personal Archive Interface

MA Series provides a personal archive interface for domain, department, and individual user queries. The email search includes multiple fields such as sender, recipient, subject, content, and date. Additionally, an Outlook Plug-in enables users to search archived emails directly through Outlook.

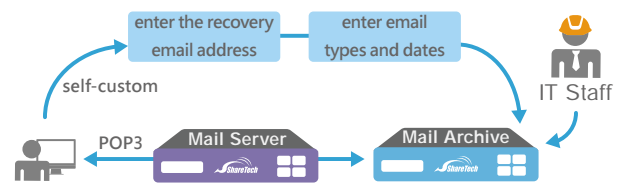
## • Event Logs

MA Series provides information, warnings, errors, and event time within the system. The simple yet detailed log query simplifies system maintenance. Administrators can easily search various logs via a web browser for efficient management.

Time	Event	Source	Level	Message
2010-08-23 10:12:28	Warning	Mail Server	Warning	Mail Server is running on a non-secure port.
2010-08-23 10:12:28	Warning	Mail Server	Warning	Mail Server is running on a non-secure port.
2010-08-23 10:12:28	Warning	Mail Server	Warning	Mail Server is running on a non-secure port.
2010-08-23 10:12:28	Warning	Mail Server	Warning	Mail Server is running on a non-secure port.
2010-08-23 10:12:28	Warning	Mail Server	Warning	Mail Server is running on a non-secure port.

## • Personal Email Disaster Recovery

In the past, file recovery often relied on IT personnel, but today, recovery tasks are executed by users. With the backup and restore feature, users can easily recover all their emails in case of computer/HDD damage or data loss.



## • Personal Dashboard

MA Series offers personalized reports with a graphic view and customizable date ranges. Clear statistical charts display regular, spam, and virus emails. Users are given more visibility into their email flow statistics.



## • AI Spam (Optional)

AI SPAM uses ShareTech's exclusive word segmentation database to analyze email content and sender behavior, distinguishing between normal and malicious emails to reduce the chance of phishing. The system's continuous learning mechanism quickly responds to zero-hour attacks, achieving 99.5% accuracy in recognizing spam emails.

# SPECIFICATIONS

		MA-200	MA-400	MA-600+	
<b>Hardware &amp; Capacity</b>					
RAM [GB]		4GB	8GB	16GB	
HDD		1TB	2TB	4TB*4	
Rack Unit		1U rack-mountable	1U rack-mountable	1U rack-mountable	
LCM		•	•	x	
User Accounts		Unrestricted	Unrestricted	Unrestricted	
Recommended Number of Users		Under 200	Under 500	Under 2000	
Email Processing/Day (100KB/Mail)		60,000 (6G)	120,000 (12GB)	2,000,000 (15GB)	
<b>Features</b>					
Mail Gateway		•	•	•	
System Management	Network Setup	IPv4/IPv6	•	•	
	Multiple Domains (Names)		•	•	
	Role-Based Administration		•	•	
	Backup Management	Remote Backup(NAS/Samba/FTP/USB)		•	•
		Online Browsing		•	•
		Search for Nearline Storage Mails		•	•
		Mail Disaster/System Recovery		•	•
	Architecture	Bridge Mode		•	•
		Gateway Mode		•	•
IMAP/POP3 Proxy		•	•		
Access Management	Privilege	Admin/Inquirer/User	•	•	
Authentication & Permissions	oAuth	Google OAuth 2.0	•	•	
		Office 365 OAuth 2.0	•	•	
	Account Integration	LDAP	•	•	
		Active Directory (AD)	•	•	
Mail Audit & Firewall	Audit Rules		•	•	
	Mail Firewall		•	•	
	IP Blocking		•	•	
Antivirus	Engine	Clam AV	•	•	
		Kaspersky	Optional	1-year license	
Spam Filtering	Database	IP Reputation	•	•	
		Bayesian Filtering	•	•	
		URL Filtering	•	•	
		Auto Learning & Sharing	•	•	
		System/Personal B/W Listing	•	•	
		Sandstorm	•	•	
		AI Spam	Optional	Optional	
Email Auditing & Archiving	Mail Migration	POP3	•	•	
		IMAP	•	•	
		Cloud HDD	•	•	
	Pre-/Post-Auditing		•	•	
	Online Browse/Search		•	•	
	Personal Email Archiving		•	•	
	Email Query/Forward		•	•	
	Attachment/Content Search		•	•	
Auditing & Filtering		•	•		
Mail Encryption	Encryption Mode		Optional	•	
	Settings		Optional	•	
Personal Archiving	Email Query		•	•	
	Email Auditing		•	•	
	Email Quarantine/Deletion		•	•	
	Mail Behavior Analysis	Association Graph (Including Total Mailing & Working Hour)		Optional	Optional
Mail Resume		Optional	•		
Others	Personal Dashboard		•	•	
	TLS Protocol		•	•	
	High Availability (HA)		•	•	
	Uninterruptible Power Supply (UPS)		•	•	
	WEB UI		English and Traditional/Simplified Chinese		
	Max Number of Users		Unrestricted	Unrestricted	