

SPECIFICATIONS



SHARETECH HARDWARE-BASED MAIL SERVER

產品型號	MS-6400X	MS-6410X	MS-6420X	MS-6430X	MS-6440L	
Hardware						
RAM	4G	4G	4G	8G	16G	
HD Space	500G	1TB	1TB	2TB	2TB*3	
Mounting	1U	1U	1U	1U	1U	
LCM		•	•	•		
Network Interface	LAN/HA	LAN/HA	LAN/HA/iSCSI 2*10G	LAN/HA/iSCSI	LAN/HA	
Capacity						
Max. Licensed Users	Unrestricted	Unrestricted	Unrestricted	Unrestricted	Unrestricted	
Max. Email Delivery	2,100,000	4,500,000	5,800,000	9,200,000	12,400,000	
Recommended Number of Users	Under 100	Under 200	Under 200	Under 400	600 - 1,000	
Software						
Basic Setup	Multiple Domains	•(5)	•	•	•	
	Email Migration	•	•	•	•	
	Send Large Files with Hyperlinks	•	•	•	•	
	SMTP Proxy	X	X	•	•	
	Email Encryption	X	X	PDF/ZIP	PDF/ZIP	PDF/ZIP
	Mail Gateway	X	•	•	•	
	Email Auth.	X	•	•	•	
	POP3 Proxy (Admin./Users)	(•/X)	(•/X)	(•/5)	(•/10)	(•/Unrestricted)
Anti-Virus	Firewall	•	•	•	•	
	Clam AV	•	•	•	•	
	Kaspersky	Optional	Optional	Optional	1-year license	
Spam Filtering	Greylisting	•	•	•	•	
	IP Reverse	•	•	•	•	
	URL Filtering	•	•	•	•	
	Auto-Learning	•	•	•	•	
	Shared signatures	•	•	•	•	
	DKIM&SPF Auth.	•	•	•	•	
Mail Audit	Sandstorm	X	X	•	•	
	Mail Record	•	•	•	•	
	Content Filtering	•	•	•	•	
	Audit Setting	Optional	•	•	•	
Account	Personal Information Filtering	Optional	Optional	•	•	
	Pre-and-Post Auditing	•	•	•	•	
	Application & Group Management	•	•	•	•	
Backup	Role-Based Management	•	•	•	•	
	Create Email Accounts (Host/AD/LDAP)	•	•	•	•	
Log	FTP/Samba/USB	•	•	•	•	
	iSCSI	X	X	•	•	X
Management	Statistical Report	Optional	•	•	•	
	SSL Certificates	•	•	•	•	
	Disaster Recovery	•	•	•	•	
	UPS	•	•	•	•	
	HA / Off-Site Backup	(•/X)	(•/Optional)	•/•	•/•	•/•
Webmail	Hard Disk Health Check	•	•	•	•	
	Web Server	X	•	•	•	
	Distributed Architecture	Sub only	Sub only	Core & Sub	Core & Sub	Core & Sub
	E-paper	Optional	•	•	•	
	Quota (Max. 100G)	10GB	10GB	30GB	30GB	100GB
	2-Step Verification (Line & Email)	X	•	•	•	
Webmail	Auto-Reply/Forward/Delayed Delivery	•	•	•	•	
	Google Calendar Sync.	Optional	Optional	•	•	
	Cloud HDD	•	•	•	•	
	Shared File Links	•	•	•	•	
	Bulletin Board/Calendar	•	•	•	•	
	Personal Mail Rules	•	•	•	•	
	Mail Retrieve	•	•	•	•	
	Mail APP(iOS&Android)	•	•	•	•	

INCREASED EFFECTIVENESS OF MAIL SECURITY



- Supports on 64-bit OS 3.0, x86 server platform
- Employs multi-layered spam filtering
- Clam AV and additional Kaspersky
- Shared spam signature
- Email encryption and certified email

RECORD-BASED MAIL BACKUP AND RESTORE



- Supports POP3 and IMAP protocols
- External USB hard drives backup
- Distributed architecture
- Disaster recovery system
- HA and Offsite Backup
- UPS graceful shutdown

COMPLETE SEAMLESS SOLUTIONS



- Mail APP available on iOS and Android
- Easy access to Cloud HDD
- Sync contacts and calendar with Outlook and iPhone
- Marketing digital e-paper

MAIL TRAFFIC AUDITING AND MONITORING



- Content-level filtering
- Specific group policies for departments
- Multiple filtering mechanisms
- Policy-based email auditing for in/outbound email

COMPETENT SYSTEM MANAGEMENT



- Automatic backup and fast lookup
- Scheduled statistic report
- Easy access to Cloud HDD
- Role-based administration
- Cloud-based service system (Eye Cloud)

KEY FEATURES & BENEFITS

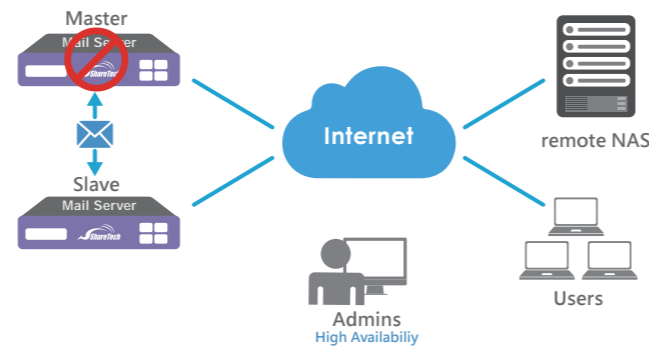
I. SYSTEM MANAGEMENT

- Mail Firewall**
Inbuilt firewall manages and filters all inbound and outbound email traffic to protect organizations from email-based threats. Added detections such as anomaly flow, authentication failures, and sender confirmation deliver deeper levels of protection for defeating today's increasingly complex attacks.
- Hassle-Free Mail Migration**
Existing user accounts and email can be imported within a few minutes without worries of message loss due to human errors or domain migration. Administrators can create users accounts automatically, manually or integration with AD servers.
- POP3 Proxy**
ShareTech mail server acts as a stand-alone messaging server with full SMTP email server functionality, including flexible support for secure POP3, IMAP, and Webmail access.
- Statistics Reports**
A scheduled statistic report can include Top N traffics, POP3 traffic, personal information, mail distribution, quarantined messages, worst passwords ranking, sources of spam mail, etc. Administrators can modify reporting properties and customize display of reports for your business requirements.
- Signature Line (Email Disclaimer)**
Automatically add company signature line and email disclaimer on outgoing email. Different domains can set up different content. Besides, administrator can also set up the accounts and IPs that do not follow the setting.

II. BACKUP AND RECOVERY

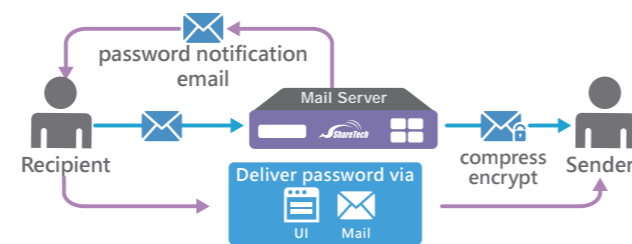
- System Backup and Disaster Recovery**
Users can restore the configuration files to a USB drive. When regular operations are interrupted, a disaster recovery operation can be performed. If the mail server does not boot from the installed image, it can be booted using a USB drive. Moreover, when the mail server is operating normally, the installed image can be upgraded by performing a USB boot operation.
- Mail Record and Backup**
Incoming and outgoing mail including attachments will be automatically and timely backed up to a local disk, the network neighborhoods or a remote FTP server. Administrators can easily monitor email traffics by searching for keywords and reasons behind blocking.

- High Availability (HA) Off-site/Cloud Backup**
ShareTech mail server offers additional survivability-never-fail network. Off-site backup is also available to store backup data external to the core IT environment. The slave server will take over the master server to ensure email service continuity once device failure occurs. Overall, three backup options are provided to maintain the smooth email delivery process.

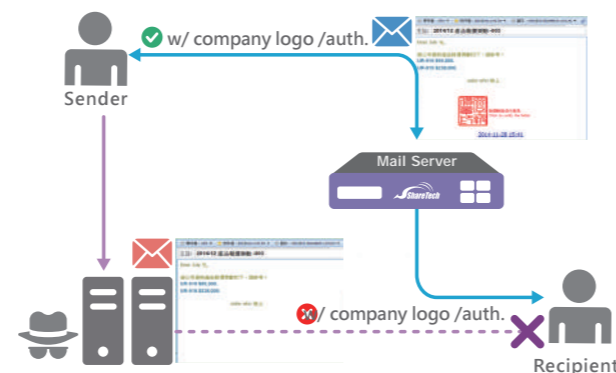


III. MAIL SECURITY AND FILTERING

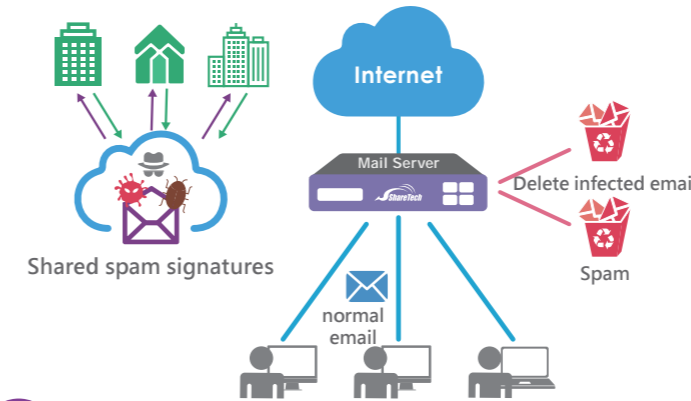
- Email Compression and Encryption**
Administrators may select users to convert .eml mail messages to PDF files or simply encrypt and compress email attachments to protect sending sensitive data over email. Recipients can use a permissions password to access the file and view the original email and its attachment(s) in PDF Reader.



- Certified Mail**
Users' email can be digitally signed with an electronic stamp. Should you need to prove at some later stage that you sent your email, the attached signatures provide admissible certifiable proof that your email was posted on the date and time specified.

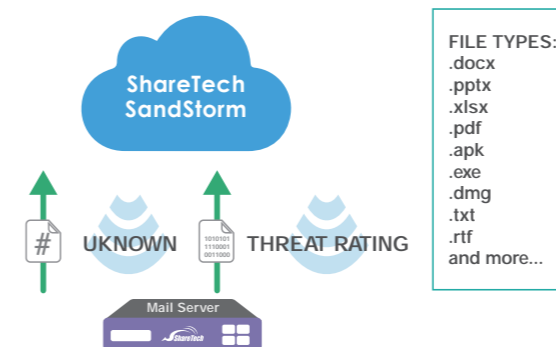


- Anti-Virus and Spam Filtering 3.0**
Clam AV is provided for virus scanning which can detect over millions of viruses, worms, and Trojans. Customers may choose to purchase a Kaspersky module for their security needs. ShareTech spam filtering 3.0 includes the shared signatures mechanism shares a signature of an early receiver with the rest of the group so that higher spam detection accuracy can be obtained.



- Protection against Ransomware**
Transport rules provide the ability to examine email subjects, attachments (zip/rar), and file extension as a defense against the ransomware attack. Additionally, a built-in URL database is provided to block fast-spreading ransomware threats delivered through malicious attachments and URLs.

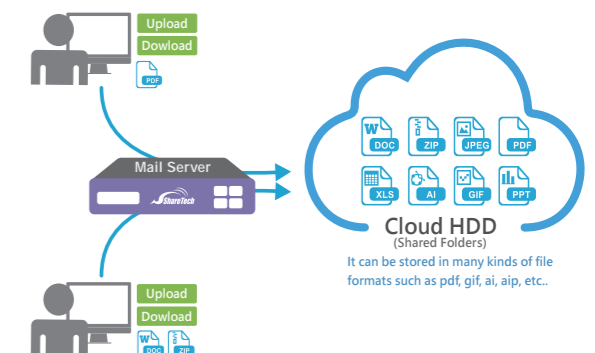
- ShareTech Sandstorm-Malicious Programs Filtering System**
To detect unknown attached files, such as file in Word, Excel, PowerPoint, PDF, ZIP or RAR format, ShareTech Sandstorm system will compare the suspicious files with our database. Threatening emails will be quarantined and will not have the opportunity to affect the operation of email system.



- SPF / DKIM / DMARC Authentication**
SPF defines a process to validate an email message that has been sent from an authorized mail server to detect forgery and to prevent spam. DKIM allows an organization to claim responsibility for a message in a way that can be validated by the recipient. Moreover, DMARC is added to allow a sender's domain to indicate that their emails are protected by SPF and/or DKIM, and to tell a receiver what to do if neither of those authentication methods passes.

IV. WEBMAIL AND OTHERS

- Personal Data Protection**
ShareTech mail server protects personally identifiable information such as ID number, credit card number, phone number, mobile number, and date of birth. Whether it is employee data or customer data, companies have an obligation to protect the personal information they stored on their network.
- Eye Cloud**
A cloud service platform provides users friendly interface to support instant equipment maintenance and management. It is an all-inclusive solution to monitor various networking appliances deployed in either external or internal networks. When an anomaly occurs, administrators will be notified of the problem.
- Webmail Two-Step Verification**
People used to set the same password for different websites. However, once clicking phishing URL or downloading malicious files, the password can easily be snatched. ShareTech Webmail now equips with two-step verification. User can set up LINE notification or backup email account to secure your webmail. You can still keep your account safety even if the password has been exposed.
- Cloud HDD**
ShareTech mail server supports web disk-like platform which gives users the ability to store, synchronize, and share content on a relative core and assign access permission from any device. Users have an individual storage space to create folders, download/upload files and categorize data into preferred management. Moreover, users can set up a password, dates and download times to share large files outside of your organization with a shared link.



- Calendar Integration and Sync**
Webmail calendar allows you to manage your appointments via drag & drop and inline editing. It also supports calendar overlays to allow simultaneous viewing (side-by-side) of shared calendars. ShareTech provides APP to sync Webmail with smart devices. Moreover, ShareTech provides Outlook Connector that can integrate with Outlook contacts (included contact group). Webmail Calendar also combines with Google Calendar. In one single page, user can check personal and business schedule at the same time and can arrange events easily.