

SHARETECH UTM SPECIFICATION

Models	UR-940	UR-940H	UR-960	UR-960H	UR-960C	UR-970C	UR-980
Throughput and Connections							
I/O Interfaces	4 x 1Gb	4 x 1Gb	6 x 1Gb	6 x 1Gb	14 x 1Gb	10 x 1Gb / 4 x 1 Gb SFP	18 x 1Gb
	2 USB 2.0	2 USB 2.0	2 USB 2.0	2 USB 2.0	2 USB 3.0	2 USB 3.0	2 USB 3.0
UTM Throughput (Gbps)	3.2	3.2	5.5	5.5	5.5	8	14
VPN Throughput (Mbps)	460	460	460	560	560	1600	2200
AV Throughput (Mbps)	500	500	500	650	650	800	1400
Concurrent Sessions	2 M	2 M	2 M	3.3 M	3.3 M	4M	6M
New Sessions per sec	79K	79K	79K	110K	110K	200K	200K
Mail Scan/day (million)	2.6M	2.6M	2.6M	4.28M	4.8M	5M	6M
LAN Bypass				•	•	•	•
VPN Tunnels							
IPSec VPN Tunnels	500	4,000	4,000	4,000	4,000	6,000	12,000
PPTP/L2TP	200	500	500	500	500	1,000	4,000
SSL Tunnels	300	600	500	500	500	1,000	4,000
Features							
Anti-Virus	Clam AV	•	•	•	•	•	•
	Kaspersky		Optional		Optional	Optional	Optional
IDP Defense	Optional	•	Optional	•	•	•	•
Botnet Defense	Optional	•	Optional	•	•	•	•
3rd-Party URL Database		1 year		1 year	1 year	1 year	1 year
3rd-Party APP Database		1 year		1 year	1 year	1 year	1 year
Firmware auto backup		•		•	•	•	•
Reports	Optional	•	Optional	•	•	•	•
Mail Audit		Optional		Optional	Optional	Optional	•
Content Record		•		•	•	•	•
VPN (IPSec/PPTP/L2TP)	•	•	•	•	•	•	•
SSL VPN	•	•	•	•	•	•	•
Wireless APs numbers	50	100	100	100	100	Unlimited	Unlimited
Recommended User Numbers	100	100	100-200	100-200	100-200	600	1K-2K
All ShareTech UTM include features below							
Hardware	Security	Backup & Recovery	Management	Administration			
<ul style="list-style-type: none"> 1U rackmount (UR-980 2U rackmount) Unlimited user license Custom Port Power 100V-240V CE and FCC certification 	<ul style="list-style-type: none"> Firewall Anti-Spam VPN URL Filtering Flow Analysis Anomaly IP Analysis Intranet Protection 	<ul style="list-style-type: none"> HA 3G/4G Broadband Load Balance USB Recovery Cloud Service System 	<ul style="list-style-type: none"> QoS APP Control Wireless AP Control Bulletin Board Load Balance Virtual Server Co-Defense Authentication 	<ul style="list-style-type: none"> CMS Sub-Administrators Custom Login Page Multilingual User Interface Auto Firmware Update Connection Test 			

UTM

Blocks Unknown Threats with a Comprehensive Suite of Advanced Protection.

In addition to high network speed, a business needs collective and profound security protection as well. ShareTech UTM is a full-function secured gateway product that processes of speed and safety. It is the best network choice that fits companies ranging from small branch offices to middle businesses and empowers network administrators and their teams to work more efficiently and productively.



* Maximum number of WAN ports in UR Series are 6.

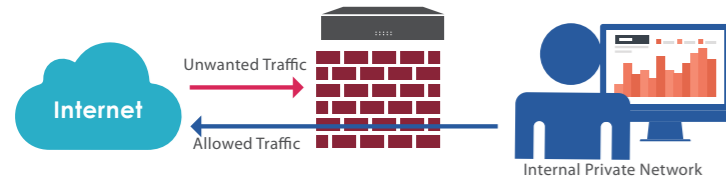
FEATURES

ShareTech UTM's are unified security gateway products that offer minimum latency and improve processing speed for diverse network environments. Whether you need a solution for a spot or branch office, want to manage your suites network, protect your school campus, or a large enterprise requiring higher scalability and availability and advanced features. ShareTech UTM's have all ideal solutions in a single appliance!

I. SECURITY

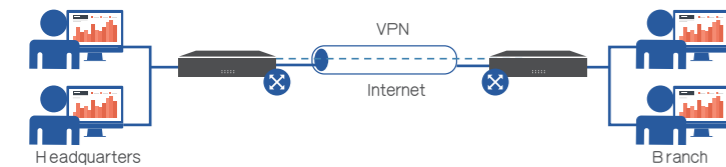
Superior Gateway Protection

In addition to firewall protection, superior security features such as intrusion detection and prevention (IDP), content filtering, QoS, and authentication are provided to benefit business directly from easy management and cost-effectiveness.



Encrypted VPN Tunneling

Access over the sites are protected and private data can be sent securely with multiple VPN protocols such as IPsec, PPTP, L2TP and SSL VPN.



Internal Co-Defenses and Security Alerts

Integrated switch (SNMP) with UTM, advanced protection can be made when anomalous flow occurs. Defects can be known at the earliest possible time which prevents a business network from failure.

II. MONITORING

Complete Online Activity Record

Employees' online PC activities can be recorded including mail, browsed websites' contents (with HTTP) and attachments, files transferred by FTP, and IM chatting contents.

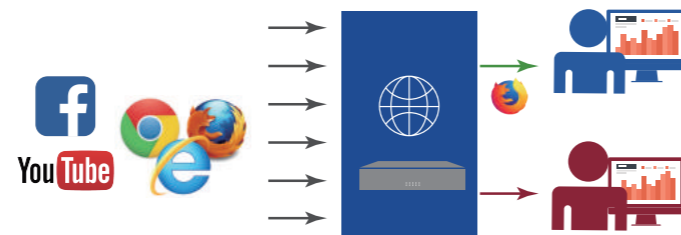
Pre-and-Post Mail Audit

Mail audit is an optional module for higher-level of security and designed to thoroughly examine email-related metadata. IT administrators can set up conditions and keyword to filter mail content. Actions can be executed if email match a previously defined condition and the system can give notification of the result.

III. MANAGEMENT

Online Behavior Analysis and Control

Cooperated with a third-party database, applications like P2P, VPN and Remote Control, Streaming and VoIP, Network Service, Online Sharing and Storage, Web Service, Social Network, Instant Messaging, etc. Moreover, the URL database is updated daily at the time specified.



Remote Office Management

Integrated with cloud management, IT administrators can manage security devices all across the headquarters and branch office sites via a browser-based platform. It combines IT administrators' experience in managing multiple physical network devices and highly simplifies network management with flexibility.

Wireless AP Control

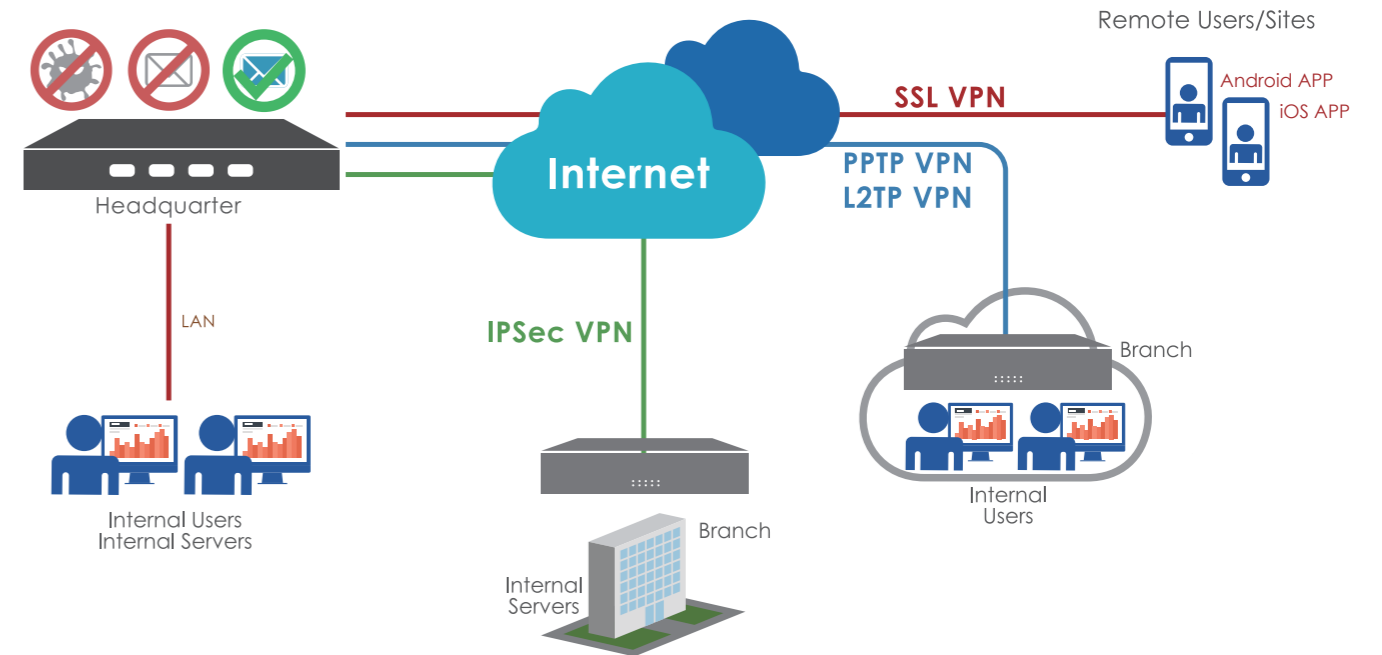
ShareTech UTM can be taken as a unified platform for configuration, control, and management of Zyxel wireless access points. On the control panel, IT administrators can easily monitor and manage the operation by viewing interface statistics (name, IP address, SSID and concurrent user) of each AP.

Embedded, Unified, and Policy-Based CMS

ShareTech CMS is a centralized platform showing useful management and monitoring solution, which allows industries to scale appliances across remote offices and clients efficiently using HTTP or HTTPS. For SMBs and IT providers, it helps avoid costly mistakes and significantly reduce costs in network management.

UTM DEPLOYMENTS

ShareTech offers complete VPN technologies on a single platform for users who deal with sensitive information. PPTP VPN is the fastest/easiest protocol to configure. L2TP VPN runs over a faster transport protocol (UDP) and bypasses network restrictions thus making it a good choice for stronger security. Site-to-Site IPsec VPN allows headquarters and their branch offices to be on the same network and sharing resources among offices. Moreover, web-based SSL VPNs are commonly supported on desktops, laptops, smartphones, and tablets, enabling multifactor authentication for remote access users.



ShareTech UTM contains built-in IDP that inspects the packets from OSI layer 4-7 (transport to application layer) and block concealed malicious code and worms delivered in TCP/IP protocols. Moreover, virus scanning, spam filtering, application access control, anomaly analysis mail audit are provided for SMBs. It is a great value set, offering good quality products on a budget.

