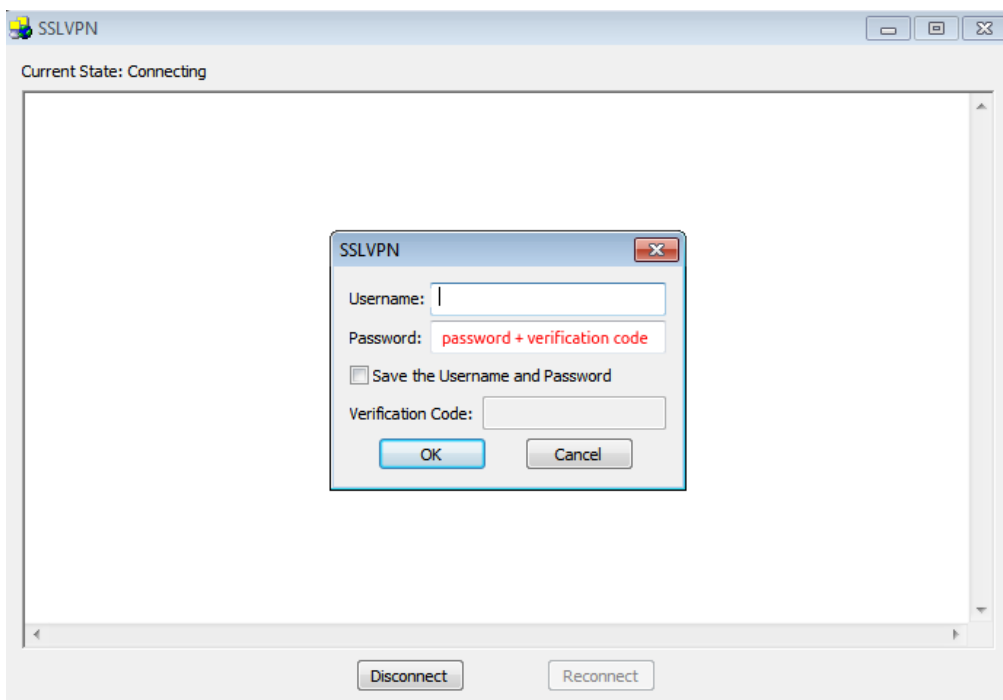
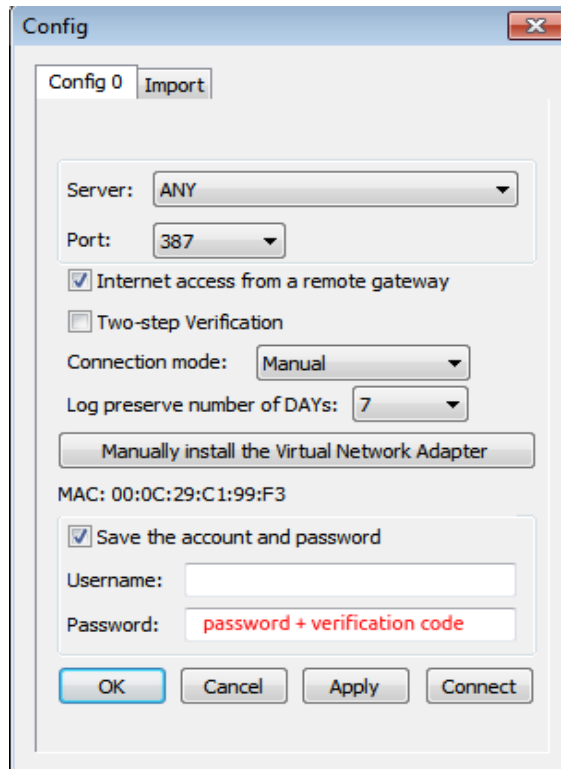


SSLVPN 2-Step Verification Instructions

- Edit Config \ Connect: When 2-step verification is enabled, you can choose the following two methods to connect
 - (1) Enter the **password + verification code** in the password field
 - For example: Password is password, verification code is 850945
=> Password field needs to enter password850945
 - The allowable time difference for the verification code is one minute



(2) When the **two-step verification** is checked, you can enter the **verification code** field when connecting

- The allowable time difference for the verification code is one minute

Config

Config 0 Import

Server: ANY

Port: 387

Internet access from a remote gateway

Two-step Verification

Connection mode: Manual

Log preserve number of DAYS: 7

Manually install the Virtual Network Adapter

MAC: 00:0C:29:C1:99:F3

Save the account and password

Username:

Password:

OK Cancel Apply Connect

SSLVPN

Current State: Connecting

SSLVPN

Username:

Password:

Save the Username and Password

Verification Code:

OK Cancel

Disconnect Reconnect

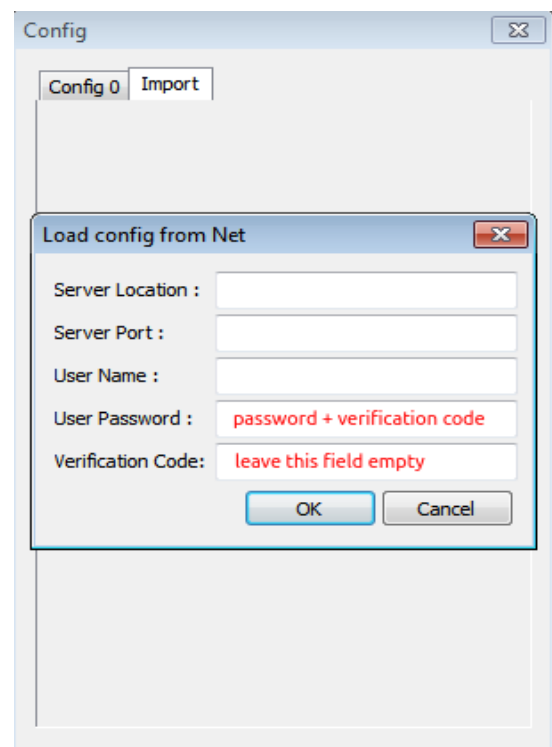
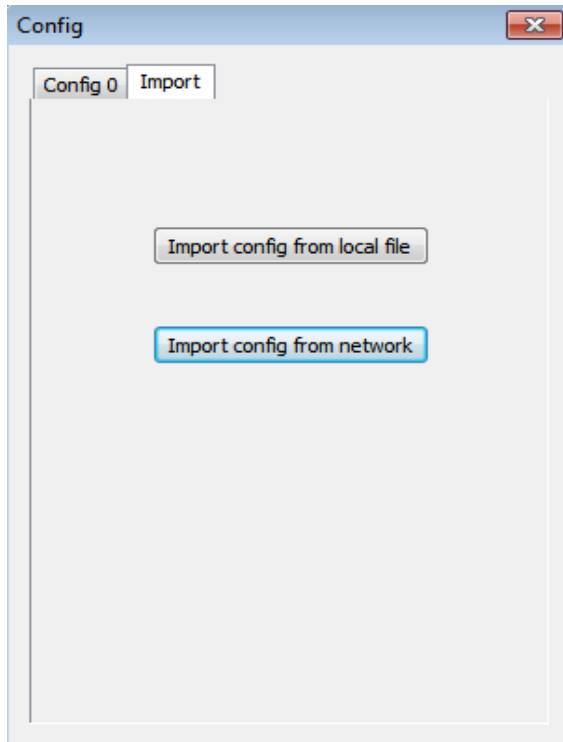
- Import > Import config from network: When 2-step verification is enabled, you can choose from the following two methods

(1) Enter the **password + verification code** in the password field

- For example: Password is password, verification code is 850945

=> Password field needs to enter password850945

- The allowable time difference for the verification code is one minute



(2) Enter **verification code** field

- The allowable time difference for the verification code is one minute

